

PHAO S | TECH

www.PhaosTech.com

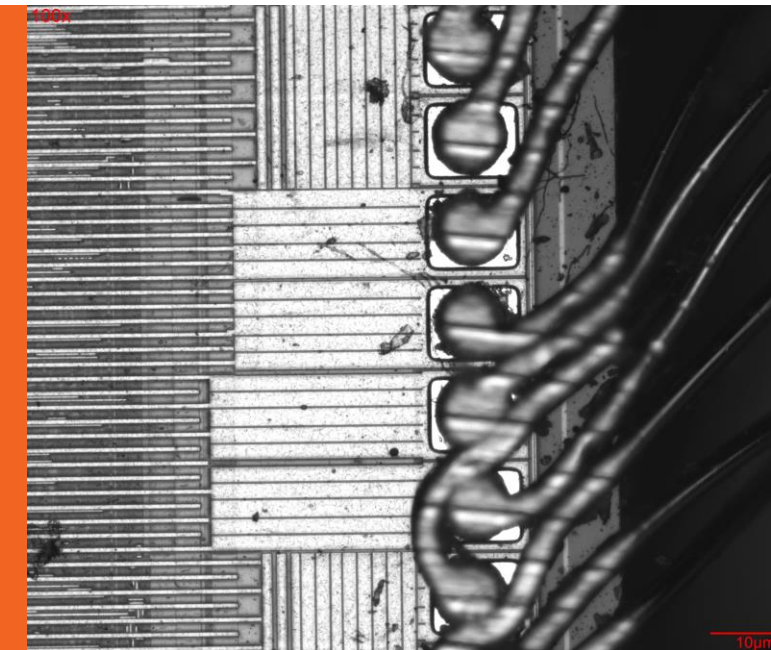
PHAOS | TECH

Phaos Technology, headquartered in Singapore, is a leader in advanced microscopy technology. As we expand our presence across the APAC region, including Indonesia, Thailand, Taiwan, and China, our dedication to innovation and excellence remains unwavering.

We are committed to delivering cutting-edge microscopy products and AI-powered software solutions for diverse sectors such as Manufacturing/ Electronics, Biomedical, Advanced Materials and Research & Design.

Discover the difference with Phaos Technology, where innovation meets sophistication, shaping the future of optical technology.

Patented Microsphere Lens



Chip_10X_Monochrome

Our Solutions



Our Solutions



OPTONANO 200



OPTONANO 200+



PT Industrial Series



PT Metrology Series



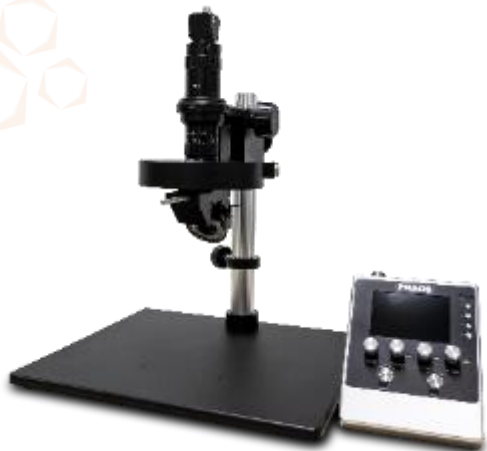
PT Biology Series



PT Stereo Series



Nexuslab



PT Zoom Series



PT Measuring Hybrid Series



PT Video Laser



PT Video



PTM 5040H

Our Solutions

OptoNano Series

Powered by : Proprietary Nova 200 Application

Key Features*

- Accuracy
- Intuitive User Interface
- Super Resolution
- Extended Depth of Field
- Resolve down to 137nm scale
- Patented Technology



OPTONANO 200



OPTONANO 200+

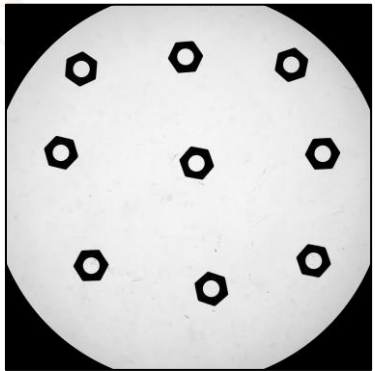
Our Solutions

PT Metrology Series

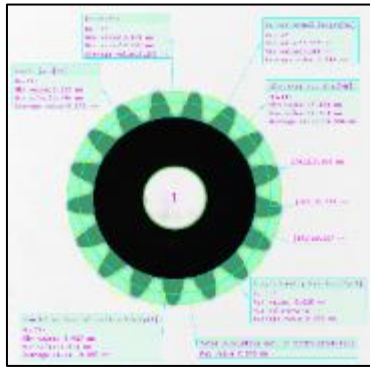
Powered by : Vision X/ Pro Application

Key Features*

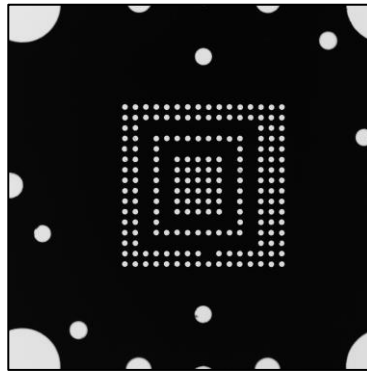
- Real-time image observation and 360° rotation
- Automatic lighting adjustment
- Autofocus
- Wide viewing angle
- High precision
- Easy to operate
- One-click measurement
- Process over 1,000 workpieces simultaneously



Nut-2_Wide-Angle_FOV



Gear_Precision_FOV_Measure



Socket-2_Precision_FOV_DZ100

PTM 3020H



PTM 1302D | 2010D | 2020D | 3020D | 2020H

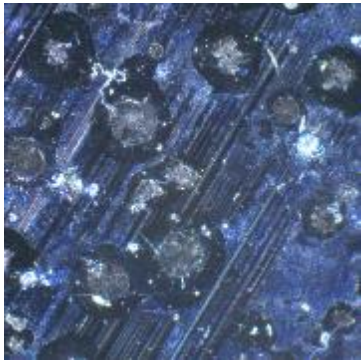
Our Solutions

PT Industrial

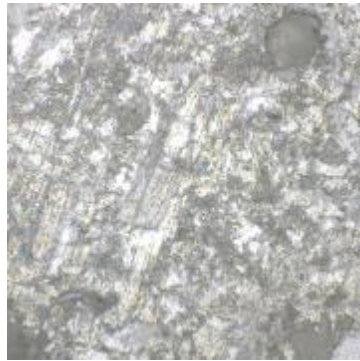
Powered by : Proprietary VueVision 1 Application

Key Features*

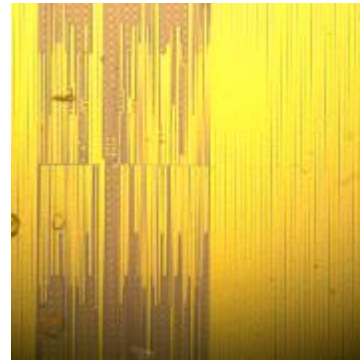
- Accurate
- Diversity
- Efficient
- Flexible
- Customisable Industrial Microscope
- Encoder Option
- 2/3 inch, CMOS, 8 Mega-pixels, 48 fps
- Objective lens 5x, 10x, 20x, 50x, 100x



Metal Block-A_20X_Darkfield



Metal Strip_20X_Brightfield



Silicon Chip_20X_Brightfield

PT Industrial (PTI-S)



PTI-S | PTI-M | PTI-L

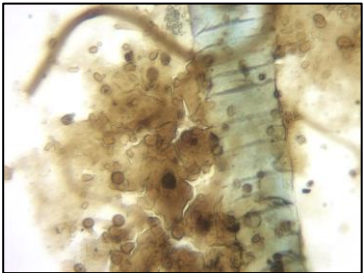
Our Solutions

PT Biology

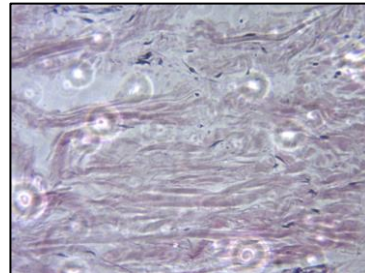
Powered by : Proprietary OsmosX 1 Application

Key Features*

- Efficient
- Kohler Illumination
- Built-in field diaphragm
- Adjustable brightness
- High image contrast
- Focus System - Coaxial coarse/ fine focusing, with tension adjustable and limit stopper, minimum division of fine focusing: 2 μ m
- Transmitted Illumination System:
 - ABBE condenser N.A. 1.25 Rack & Pinion adjustable
 - Brightness adjustable, LED Light Source, AC 85-265V input
- Objective lens 4x, 10x, 20x, 50x, 100x oil



Pond-Water-Sampe_40X_Brightfield



Mammal-Skin_10X_Phase-Contrast



PT Biology

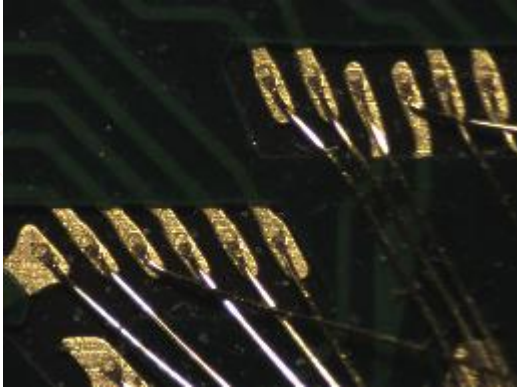
Our Solutions

PT Stereo Series

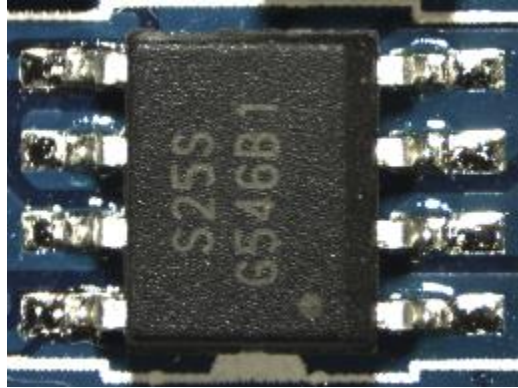
Powered by : Powered by : Proprietary StereoTech 1 Application

Key Features*

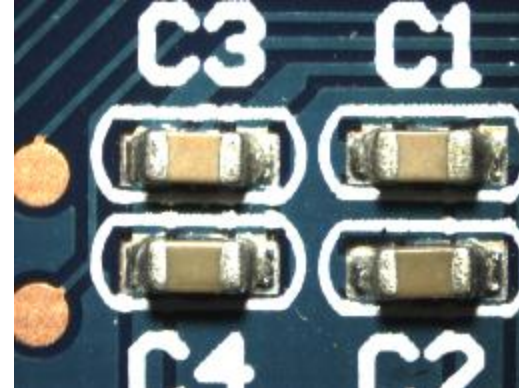
- Top & bottom bright
- Soft LED Light
- Adjustable from 7 to 63 times
- 3.5 - 252 times
- Proprietary software



Chip_2.2X



PCB-1_2X



PCB-3_0.7X



PT Stereo Series

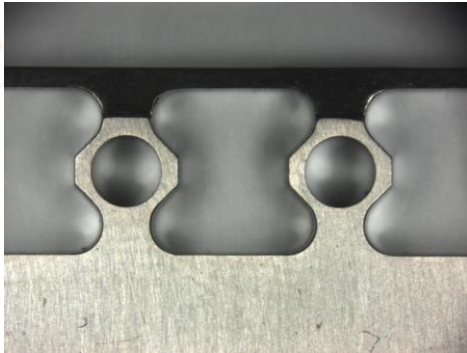
Our Solutions

PT Zoom Series

Powered by : Powered by : Proprietary StreamX Application

Key Features*

- Real-time image observation and 360° rotation
- Rotate speed adjustable, continuous zoom, multi angles observation
- Front & side LED light sources, brightness adjustable
- Wide range of depth of field, high resolution
- Working distance up to 86mm



Metal-1_2D_0.6X



Metal-1_3D_0.6X



PT Zoom Series (PTZ B)

Our Solutions

PTM Hybrid Series

Powered by : Powered by : Vision X / Vision X Pro Application

Key Features*

- High Definition Motorised Zoom Lens
- Double Telecentric Optical Lens
- Precision gantry Structure
- Intelligent Programmable Lighting System



PTMH 432 | 562 | 682

PT Video Laser Series

Powered by : Powered by : Vision X / Vision X Pro Application

Key Features*

- Stable high accuracy moving stage
- Laser scanning imaging
- 3D composite measurement
- Strobe lighting
- High speed fly-shooting
- Replaceable RGB surface light
- Independent lifting up & down
- Automatic and fast batch measurement
- Easy to operate



PTVL 333 | 432 | 562 | 682

Our Solutions

PT Video Series

Powered by : Powered by : Vision X / Vision X Pro Application

Key Features*

- Automatic Report Generation
- Auto Batch Measurement
- Easy to operate
- Flexible shooting & precise calculation
- Measurement functions: Extraction tools / Annotation tools
Construction / GD & T / Coordinate and special tools

Bridge - Type



Column - Type



PTV 322A | 432A | 322U | 432U

Our Solutions

PTM 5040H

Powered by : Powered by : Vision X / Vision X Pro Application

Key Features*

- Efficient
- Precise
- 500mm x 400mm (4 Angle R50)
- Double telecentric optical lenses that have a high depth of field
- Image Sensor 20M CMOS
- Loading Capacity 20kg
- Weight 950kg



PTM 5040H

NexusLab

Digital Science Solutions for Academia



Revolutionize your teaching experience!

Convert your classroom into a Digital Science Lab. Observe live images from any microscope in the room, share any user's screen with everyone's else, and engage your students with dynamic features.

Official Partner | **Motic**



Our Solutions

NexusLab



Enhancing engagement, efficiency and interaction in the classroom.

Cloud-System Microscopy

- Complete overview and coverage of all linked systems.
- Improved ability to guide students based on their system output.
- Annotate, compare and share what your students are seeing in real time.



Share files, live streams, images, and videos

- Effortlessly share any user's screen with other network users.
- Discuss points of interest interactively.
- Transfer files for review and collaborative investigation.



QR-Linked System

- Live camera with a conventional microscope (Built-in or separately attached)
- Constant streaming of live sample/image.
- Efficient access for users to live images on smart devices via QR codes on the microscope.



Our Solutions

NexusLab

Key Features



Skilled tools

Set assignments and rate work or note a point of interest and share with all connected users.



Intuitive software

Edit, measure, capture, and create reports with the user-friendly software



Dynamic functions

Real time voice and chat functions between teacher and student.



Scalable packages

Select your pre-configured package from 8 up to 64 students



Dedicated wireless network

MoticNet comes with its very own isolated wireless system. You do not need to connect it to any school, private or public network and therefore risk of interference is eliminated.



Custom solutions

Full Digital Classroom package includes a computer and tablets, ready for use right from the get-go!

Our Solutions

NexusLab

Moticam X5 Plus (Streaming Wi-Fi Camera)

- Turn your microscope into a Wi-Fi station
- Share your images with up to 6 devices at the same time
- Logon with your tablet or smartphone to capture, edit and store your microscope images with the App
- Transfers live images up to 30fps
- Captures images at 4.0MP
- Integrate it to your own network via Wi-Fi or Ethernet cable, allowing more users to be standard Motic Images Plus Software for computers.



Our Solutions

NexusLab

Institute-Recommended Microscopes

M150D

Microscopes for high school education.

- Infinity optics
- Coaxial focusing
- Binocular viewing with a 20mm FOV
- Coaxial mechanical stage.

BINOCULAR VIEWING WITH FOV 20

INFINITY PLAN ACHROMATS

COAXIAL FOCUS DRIVE

DIGITAL PORTS AVAILABLE



M200T

Microscopes for tertiary education and labs.

- Easy upgrade with contrast methods (by optional accessories).
- Infinity plan with achromatic objectives.

FIXED KOEHLER 3W LED ILLUMINATION

CONDENSER WITH SLOT FOR PHASE CONTRAST AND DARK FIELD SLIDER

COAXIAL FOCUSING SYSTEM WITH TENSION ADJUSTMENT



Institute-Recommended Microscopes

M230D

Professional microscope with features for advanced applications.

- Full Kohler LED
- N-EC Plan Achromat Objectives to enable a completely robust microscope in a clinically setting.

FULL KOEHLER 3W LED ILLUMINATION

HIGHEST GRADE OBJECTIVES

22mm FOV EYEPIECE



Our Solutions

NexusLab

Supporting Global Universities

- USA (California)
- Thailand (Bangkok)
- Japan (Tokyo)
- Poland (Warsaw)
- Australia (Sydney)



Our Solutions



- High-resolution Tabletop SEM
- Clear images without noise
- Dual display SE and BSE images into 1 view
- Duplex Navi
- Coolstage
- STEM Analysis
- Variable pressure (10, 20, 30Pa)
- Fast frame rate up to 13fps



CP-8000+



Ion Sputter Coater

SEM SERIES Scanning Electron Microscope



Official Partner | **COXEM**

Our Solutions



EM-30N, a product resulting from COXEM's consistent investments in technology and development in anticipation of the nano-mechatronics era, is capable of providing clear, noise-free images even at high magnification.

Its panorama feature allows for scanning a broader area, and full compatibility with EDS ensures optimized performance.

Striking a harmonious balance between performance and price, the EM-30N proves to be an excellent asset across various research domains, contributing significantly to the advancement and utilization of cutting-edge technology.

On the other hand, EM-40 stands as COXEM's New Generation Table-top SEM, featuring the all-new GUI, NanoStation5. With a rapid frame rate of up to 13fps and an optimized auto-focus function complemented by a motorized stage in X, Y, and Z axes, it offers enhanced usability. The instrument supports variable pressure settings (10, 20, 30Pa) and is compatible with compact EBSD, enabling fast particle analysis for comprehensive research applications.

